

Network Deployment Creation Guide

The follow guide is Ideate's recommended method of creating a network deployment for AutoCAD 2009. The procedures given are an overview of the creation of a network deployment of AutoCAD 2009 to be run in non-silent mode. Further information can be found in chapter 3 of the *Network Administrator's Guide* (D:\Docs\acad_nag.pdf or \\server\AutoCAD 2009 Media\Docs\acad_nag.pdf)

The images in this guide were captured from the Create Deployments routine from the AutoCAD 2009 Installation DVD. This can be extrapolated for use with Autodesk's other AutoCAD 2009 based products.

The theme of this document: **Keep It Simple**

Steps needed before you get started

1. Turn off virus protection on client and server if possible
 - a. This can make a difference of a couple of hours
2. Create a folder called Deployments on a server
3. Share new folder as Deployments with full access
4. Create a folder called AutoCAD 2009
5. Create a folder called AutoCAD 2009 Media
6. Copy AutoCAD 2009 DVD to the AutoCAD 2009 Media folder
7. Run SETUP.EXE from the AutoCAD 2009 Media folder
 - a. Depending on the speed of your network you may want to create the deployment from the server.
 - i. **If you do create it from the server, run everything from the shared directory: \\server\Deployments\AutoCAD 2009 Media**

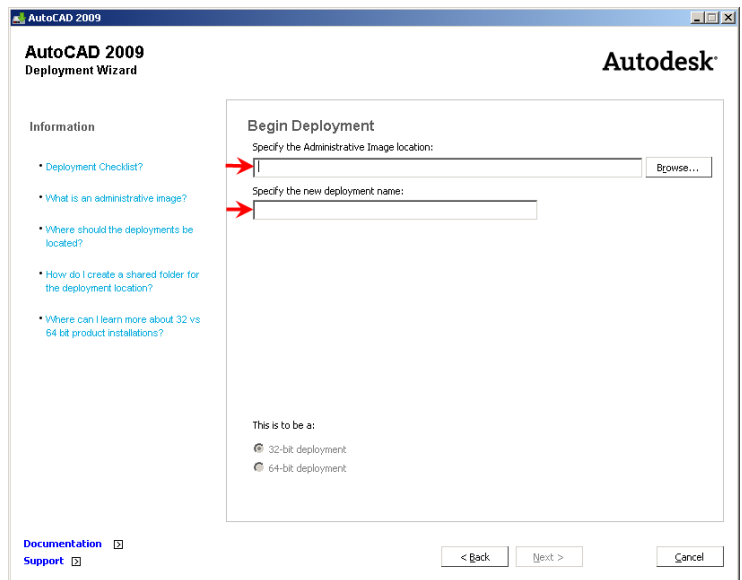
AutoCAD 2009

Network Deployment Creation Guide

Select Create Deployments



It will prompt you to browse to a folder to place the deployment in.

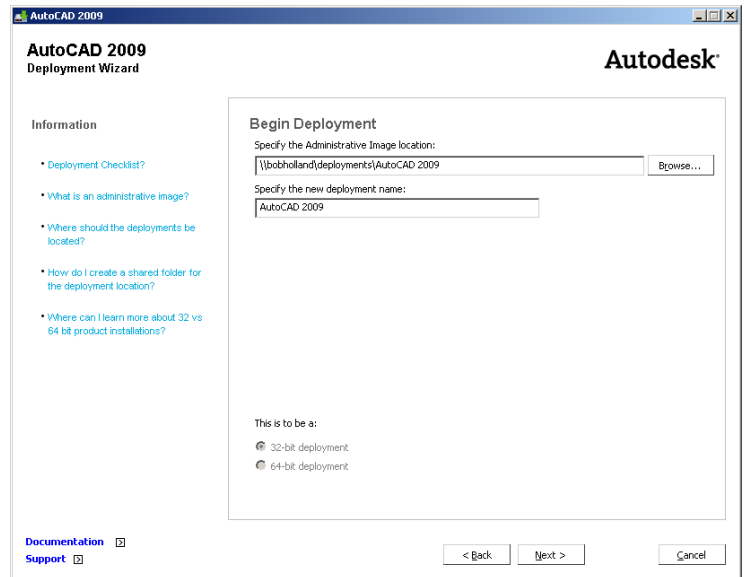


AutoCAD 2009

Network Deployment Creation Guide

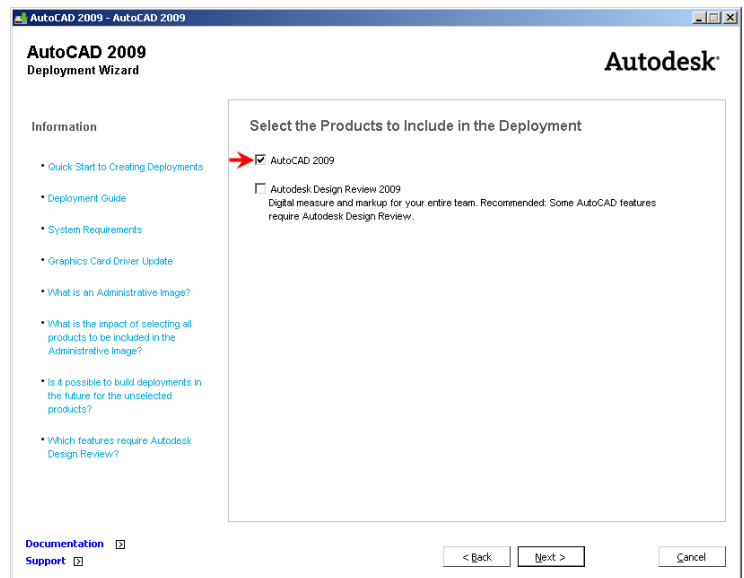
Specify the deployment location:
Browse to the
\\Server\Deployments\AutoCAD 2009
Folder that you created earlier.

Call the deployment: AutoCAD 2009



AutoCAD 2009 is already selected.

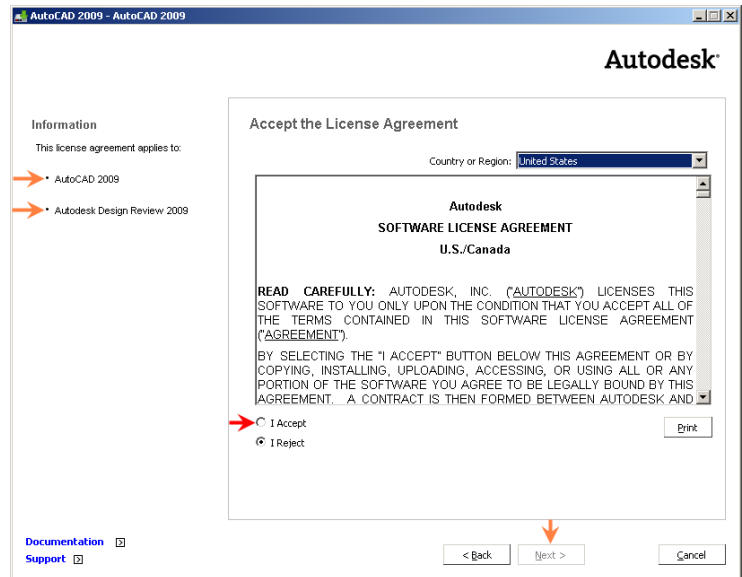
Note:
Autodesk Design Review 2009 is a
recommended option



Network Deployment Creation Guide

The license agreement applies to each item that you selected on the previous screen.

You can not proceed without accepting the EULA (End User License Agreement).



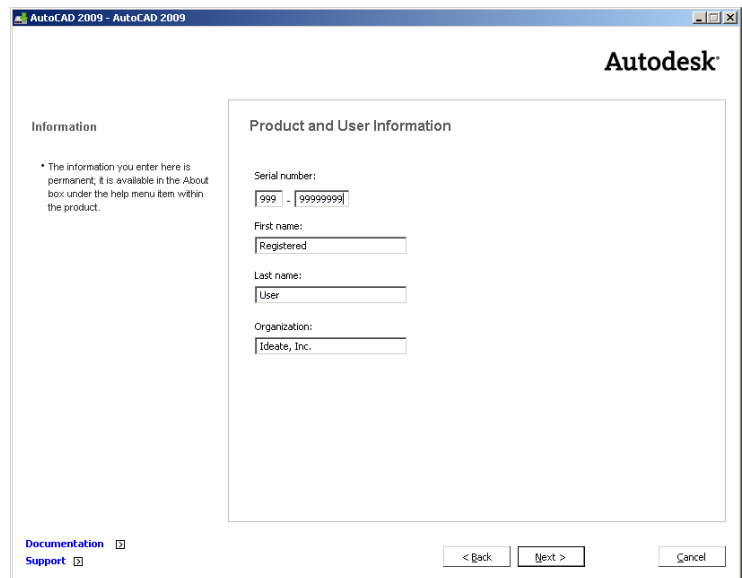
This is where you put in the corporate installation information.

Replace the 999-99999999 with your serial number from your network or multi-user stand-alone product. This would most likely be your Group ID or Subscription Serial Number.

This information is not sent to Autodesk.

Note:

You can also use serial number of 999-99999999 for a deployment for stand-alones with many serial numbers. When you go to activate the product over the internet just change the serial number to the serial number that you have assigned to that computer/user.



Network Deployment Creation Guide

Ideate recommends that you un-check **Silent mode**

➔ Client installations will be run in silent mode.

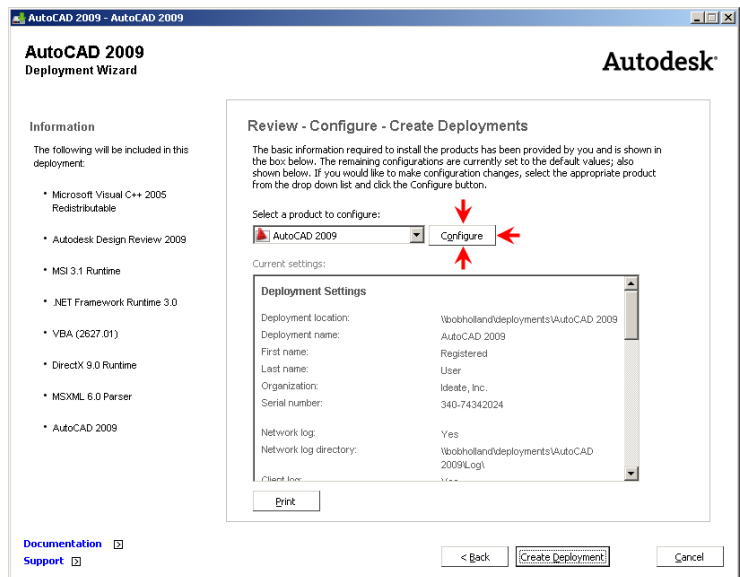
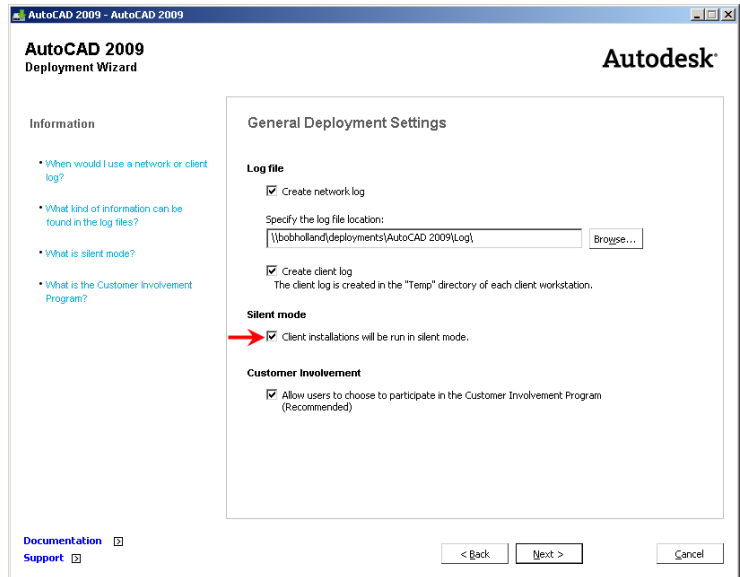
It will show you no error messages at all. It will look like it is doing the install but then will back everything out. The only way to figure out what happened is to go back and review the logs that you are currently specifying. If you do not have it create the logs, you will have to modify the deployment to not be silent so that can find out what the issue is.

Ideate recommends that you create the logs. This way, you can figure out which computers it has been installed on. And if there was an installation issue, you can check the log files for clues to the issue.

If you do not hit the Configure button, it will create a deployment for a multi-user stand-alone.

You **MUST** select configure in order to tell it that it is a network deployment.

Installations from a stand-alone deployment will never try and check out a license from a license server. It will ask you to authorize the software instead of checking out a license from the license server.

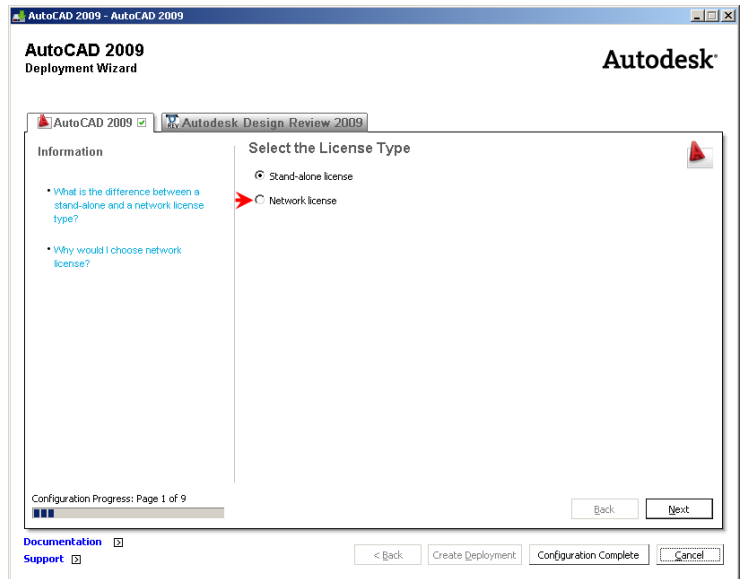


AutoCAD 2009

Network Deployment Creation Guide

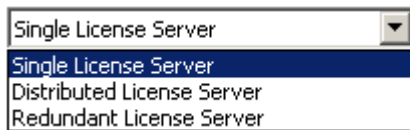
Note that the default is:
multi-user stand-alone

You need to select Network License

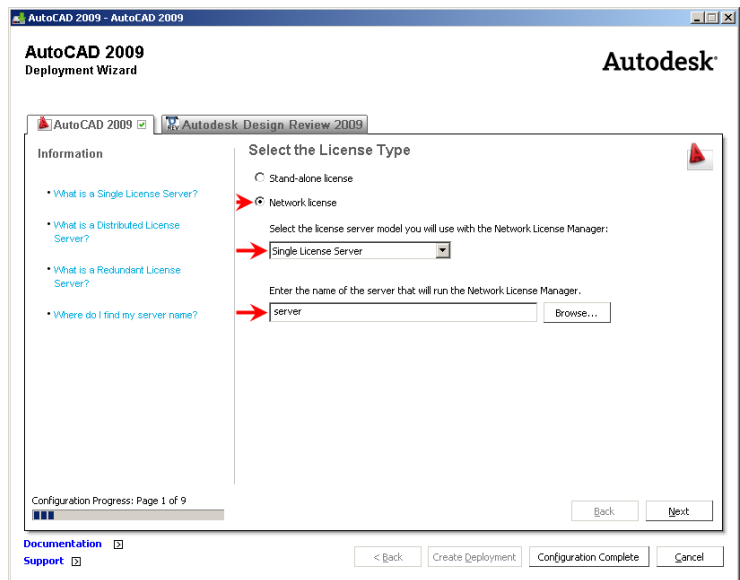


This is where you tell the deployment what Autodesk Network License Manager methodology you have implemented.

You also choose your Server Model at this time.



This is where you tell it what server(s) to look at by default

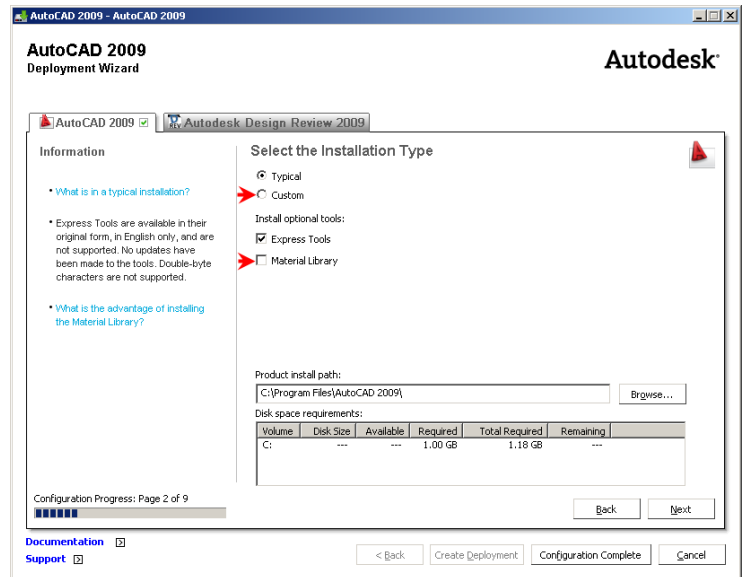


AutoCAD 2009

Network Deployment Creation Guide

If in doubt, select custom and select everything.

It is easier to provide the end user with a tool that they do not need or use than it is to have to create a new deployment and reinstall on the end users computer(s).



AutoCAD 2009

Network Deployment Creation Guide

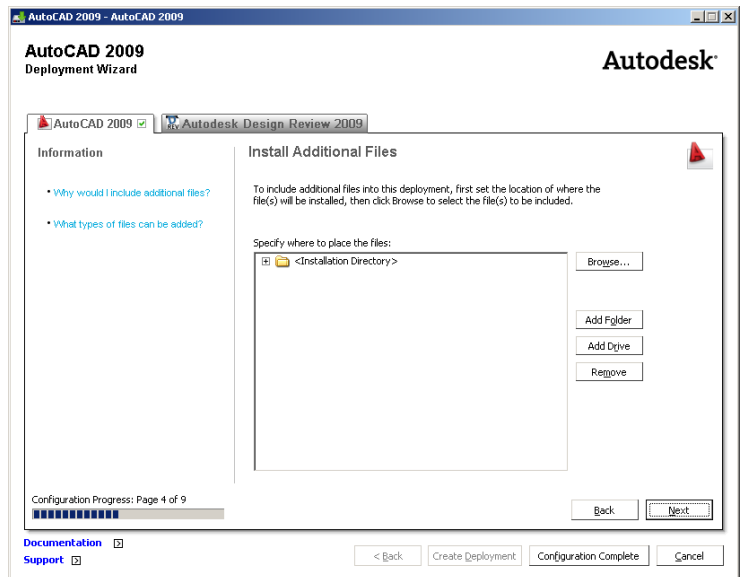
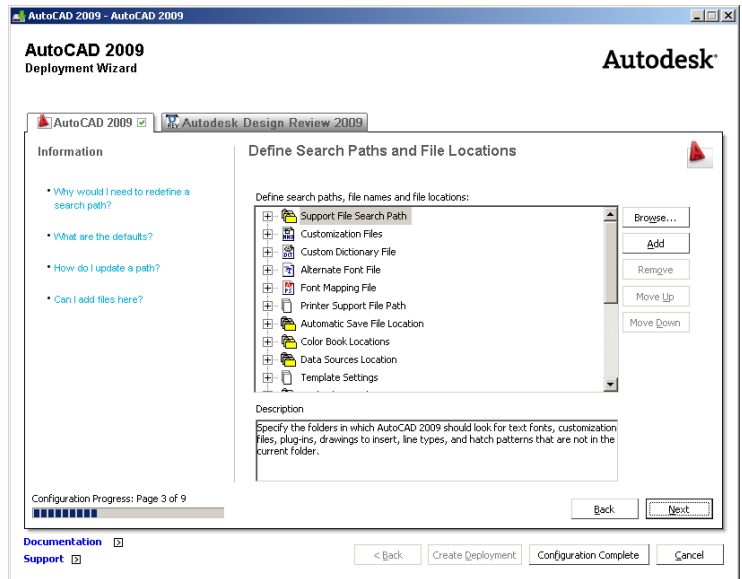
Remember the adage
“Keep It Simple”

This is a good place for it.
The more complicated that you make
the deployment; the more likely the
application will not perform as
expected.

We can make all of these changes on
the client side and test it. And then
when we are happy with the results
we can export it to an ARG file for
purposes of replication.

This way we start out with all known
good locations.

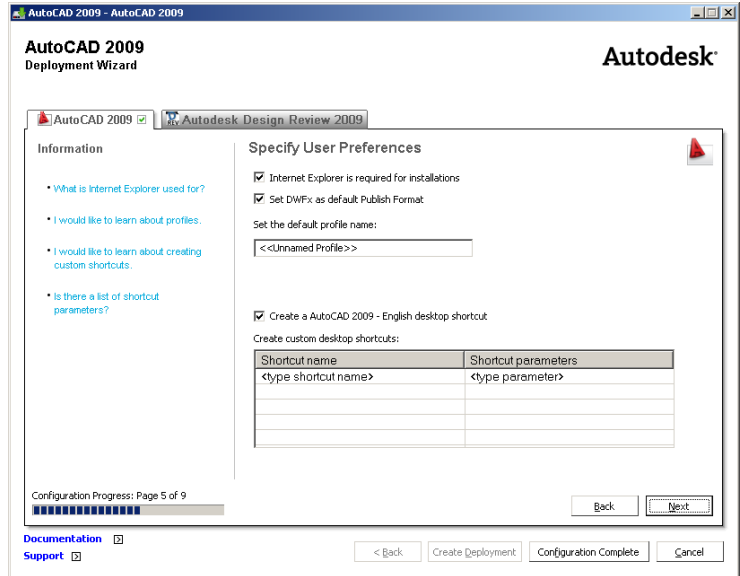
The same adage goes for this.



AutoCAD 2009

Network Deployment Creation Guide

The same adage goes for this.

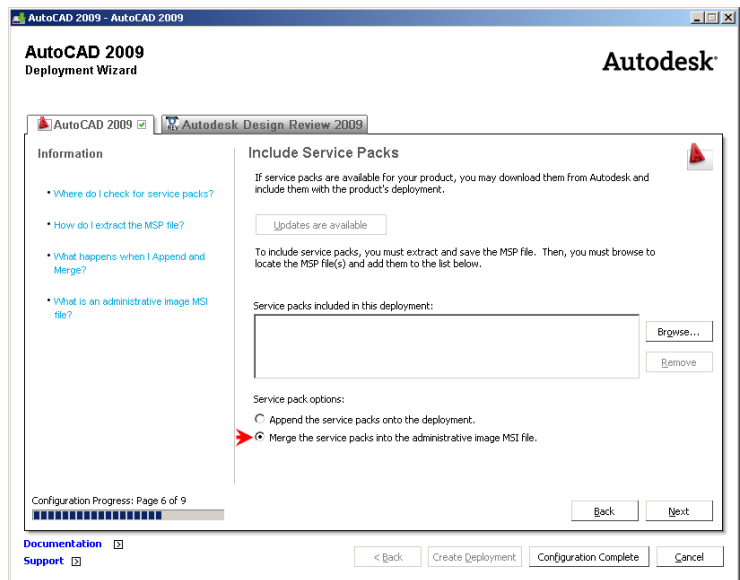


Unless you have a compelling reason, it is suggested that you do not include a service pack in the deployment.

Put the service packs in the same folder so that you know that they need to be installed.

Note: Adding a service pack to a deployment has been known to break the deployment. Application can fail to install/work properly on client computers.

One failed deployment can cost you 4-5 hours of troubleshooting. And then, you get to start over on the building of the deployment.



Network Deployment Creation Guide

If you do choose to apply a service pack to a deployment, you will need to use the merge option.

You will need to extract an MSP (Microsoft Patch) file from a service pack.

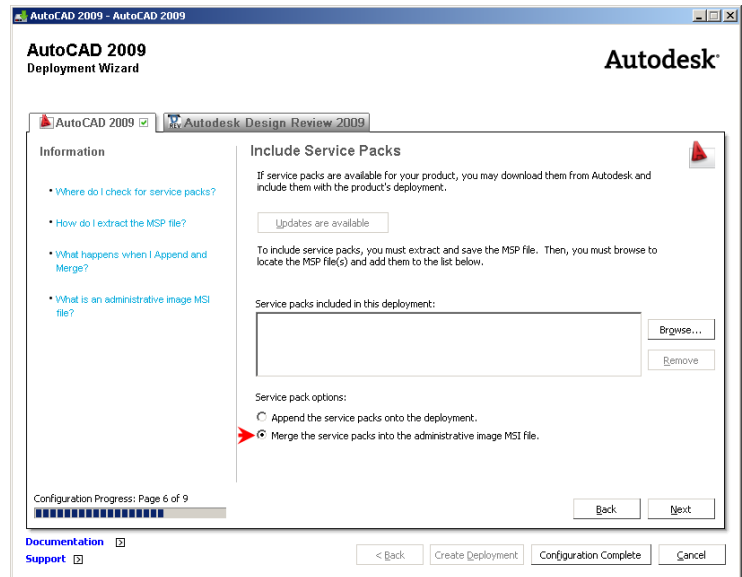
Review the service pack Readme file for information about patch usage. There is a section on how to *Apply This Service Pack to a Network Administrative Image*

. Further information can be found in chapter 3 of the *Network Administrator's Guide* (D:\Docs\acad_nag.pdf or \\server\AutoCAD 2009 Media\Docs\acad_nag.pdf)

Note:

Ideate recommends that you create a new deployment and test it to make sure that it is ok before you add the service pack.

You can make a copy of an existing one and modify it for the new path location. This way you do not break your last know good source.



Network Deployment Creation Guide

Enabling Live Updates is a mixed blessing for a CAD Manager.

Ideate recommends that you test each Autodesk service pack to make sure that it does not break any of your custom cui, menu, lisp, arx, or scripts.

Most of Autodesk's service packs can not be uninstalled, so you will have to uninstall the application and reinstall it.

For smaller organizations that do not have a CAD Manager or on-site IT staff, you are on your own most of the time anyway so you may as well let it notify you when a service pack is available. That way, you can use your good judgment as to when to install/test the new service pack.

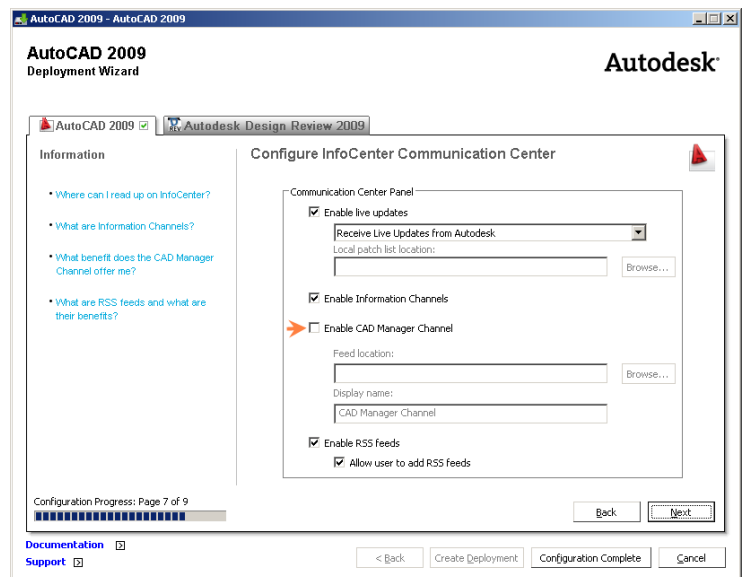
Note:

You can check for service packs and hot fixes at:
<http://support.autodesk.com>

Enabling the Information Channel an avenue free training and support.

Enabling the CAD Manager Channel is not nearly as easy as it sounds. It takes more work than it sounds. It also has to be setup before the deployment is created.

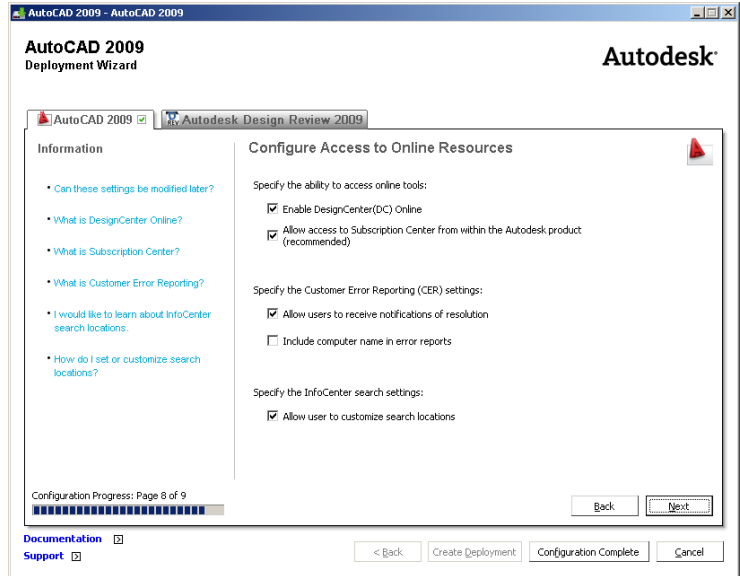
Enabling RSS feeds another avenue for free training and support.



AutoCAD 2009

Network Deployment Creation Guide

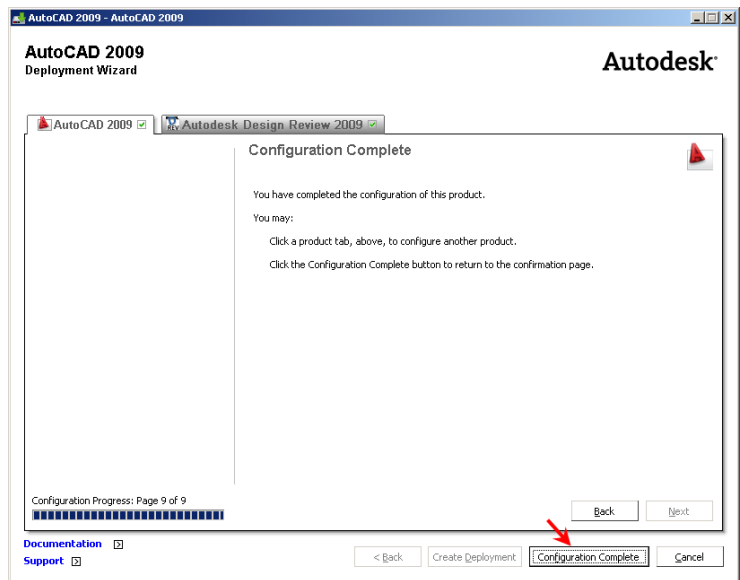
The default of having everything checked seems to work well for most organizations.



At this point you are done with the configuration of your network deployment of AutoCAD 2009

If you wish to change the installation location of your Autodesk Design Review 2009 you can go to the Autodesk Design Review 2009 tab and change it. Ideate recommends that you leave at the default location.

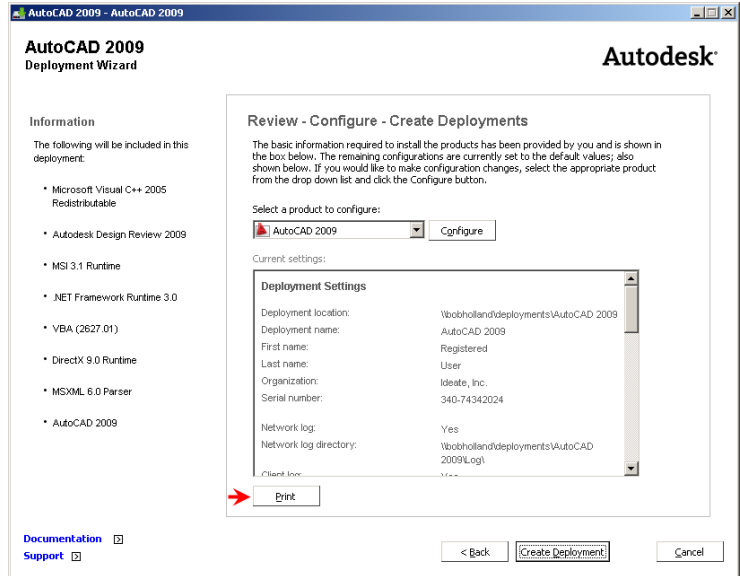
You can select the Configuration Complete button.



AutoCAD 2009

Network Deployment Creation Guide

It is not a bad idea to print this out to a PDF or XPS file so that you can remember the settings of the deployment.



AutoCAD 2009

Network Deployment Creation Guide

This is an example of the AutoCAD 2009 Setup Configuration information that is saved. Ideate recommends that you write it out to a PDF or XPS file format.

AutoCAD 2009 Setup Configuration

Deployment Settings

Deployment location:	\\bobholland\deployments\AutoCAD 2009
Deployment name:	AutoCAD 2009
First name:	Registered
Last name:	User
Organization:	Ideate, Inc.
Serial number:	999-99999999
Network log:	Yes
Network log directory:	\\bobholland\deployments\AutoCAD 2009\Log\
Client log:	Yes

AutoCAD 2009 Settings

License type:	Network License
License server model:	Single Server License
Server name(s):	bobholland
Install type:	Custom
Express Tools	Yes
Material Library	Yes
Install location:	C:\Program Files\AutoCAD 2009\
Modified search paths \ file locations:	No
Additional files included:	No
Silent Installation:	No
Internet Explorer is required:	Yes
Default profile:	<<-Unnamed Profile>>
Create a shortcut:	Yes
Custom shortcuts:	
Service packs applied:	Yes
Enable Live Updates:	Yes
Enable Info Channels	Yes
Enable CAD Manager Channel	No
Enable RSS feeds:	Yes
Allow user to add RSS feeds:	Yes
Customize search locations:	Yes
Disable DC Online	No
Allow Subscription Center access	Yes
Allow CER notification:	Yes
Include computer name:	No

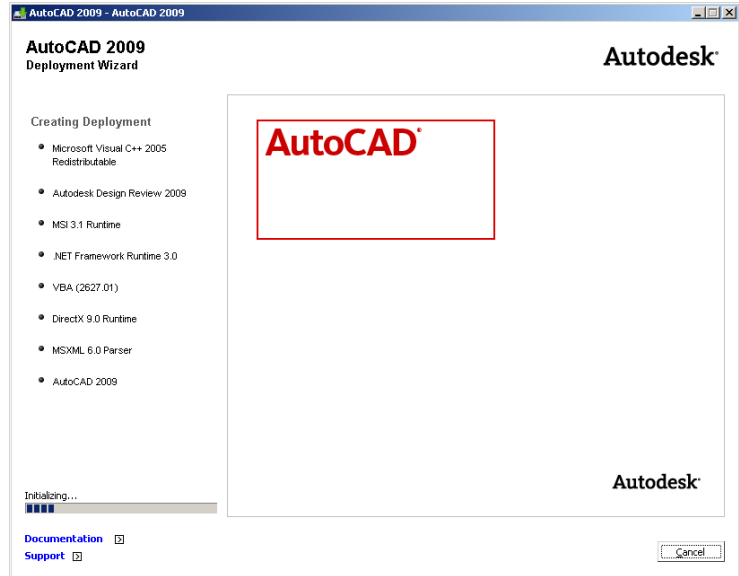
Autodesk Design Review 2009 Settings

Install type:	Typical
Install location:	C:\Program Files\Autodesk\Autodesk Design Review\

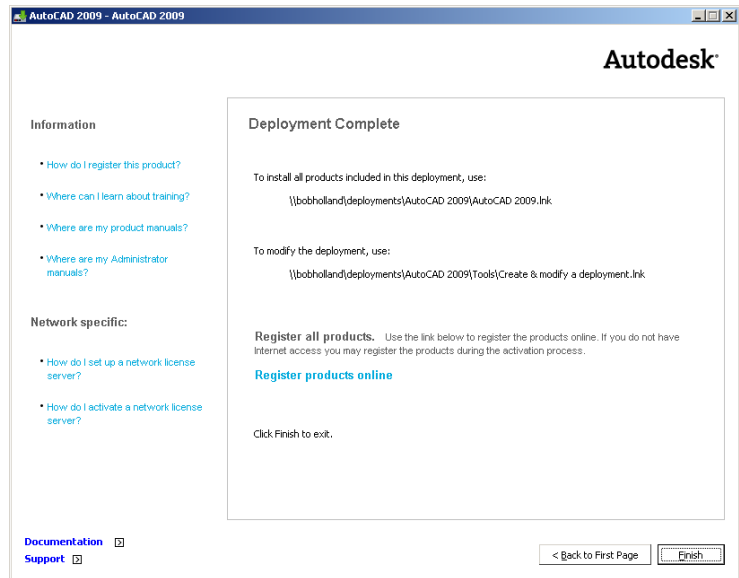
AutoCAD 2009

Network Deployment Creation Guide

This is an example of the progress window that you will see. It will check off each item as it completes it.



Upon successful completion, you will see a dialog similar to this.



This is an example of what your folder would look like when done.

Name	Size	Type	Date Modified
AdminImage		File Folder	4/3/2008 6:51 AM
Log		File Folder	4/3/2008 5:27 AM
Tools		File Folder	4/3/2008 6:51 AM
AutoCAD 2009	1 KB	Shortcut	4/3/2008 6:51 AM

The AutoCAD 2009 shortcut is what you will use to start the installation from the client side.

The UNC location for this is:
 \\server\deployments\AutoCAD 2009\AutoCAD 2009

AutoCAD 2009

Network Deployment Creation Guide

Notes