

The following guide is Ideate's recommended method of installing and setting up the Network License Manager. The procedure given is an overview of the installation and setup of the Network License Manager intended for use with a single Autodesk product.

The images in this guide were captured from the Tools and Utilities Installation routine from the AutoCAD 2009 Installation DVD. The installation and setup of the Network License Manager is the same for all AutoCAD based products as well as for Inventor, Revit, 3ds Max and 3ds Max Design.

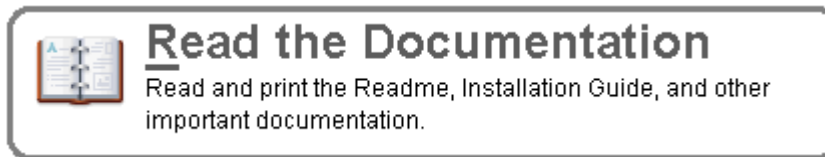
Further information regarding network licensing can be found in:

Autodesk's <i>Network Licensing Guide</i>	adsk_nlg.pdf
Autodesk's <i>Network Administration Guide</i>	acad_nag.pdf

These are available on the DVD in the folder:

\x86\Docs

Or when you run SETUP.EXE, you can go to:

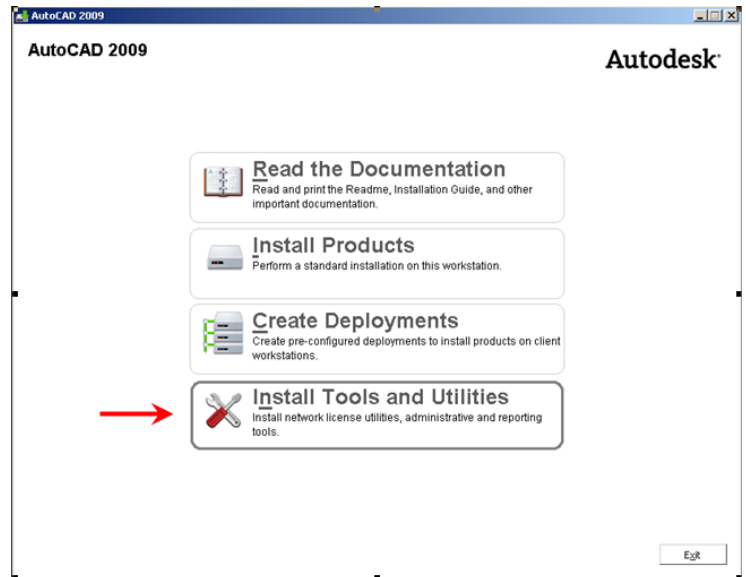


If you have any questions, please feel free to contact Ideate's technical support department at: 888-662-7268 or support@ideateinc.com

If you would like to have Ideate navigate you through the whole process via our web based tools or on-site services, please contact your Ideate Sales Rep. for a price quote.

Start the product Installation Wizard and choose:

Install Tools and Utilities

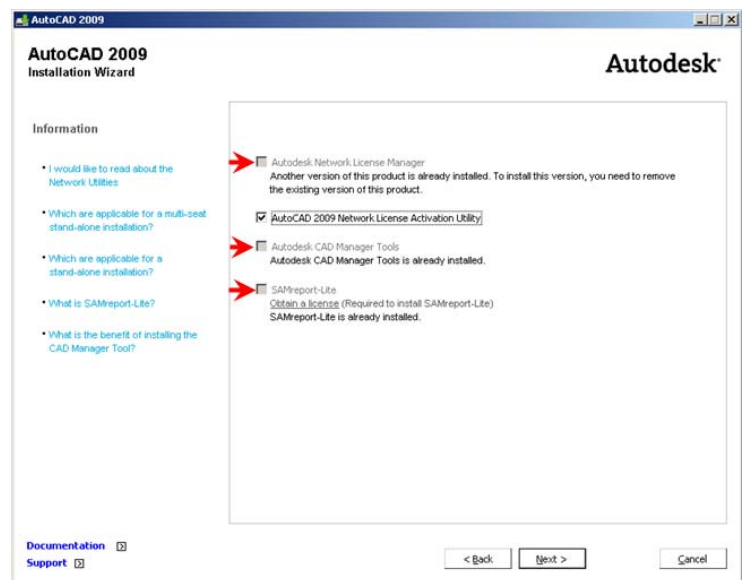


If items are grayed out earlier versions of these Autodesk applications must be uninstalled before loading the 2009 version (Note that they are grayed out).

Cancel this setup, uninstall the older applications and restart this utility.

Note:

Hitting back will not allow you to have setup re-read the information.



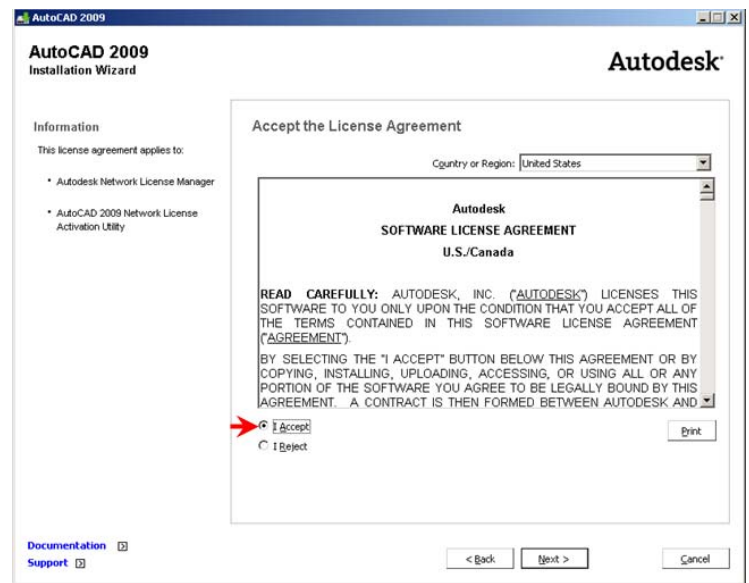
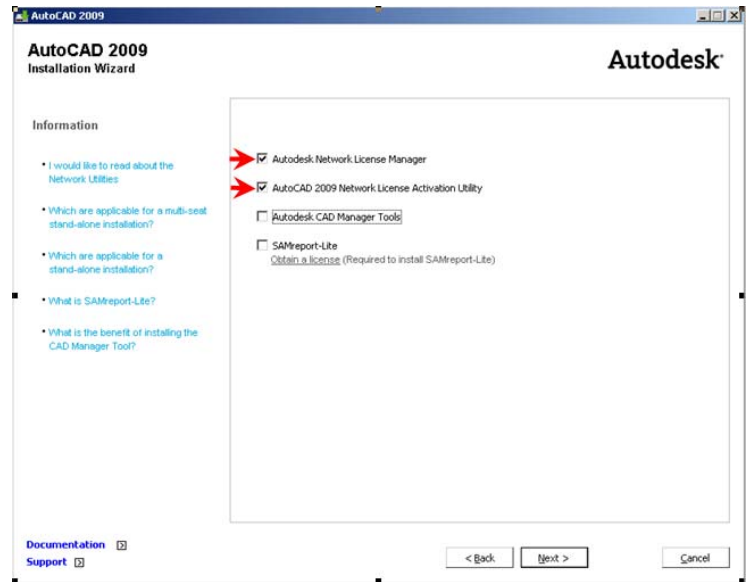
In the Select the Products to Install screen

Select:
Autodesk Network License Manager

AutoCAD 2009 Network License Activation Utility (optional)

Note:
The Network License Activation Utility is a nice tool to automatically get your authorization file.

You need to accept the EULA (End User License Agreement) in order to continue.

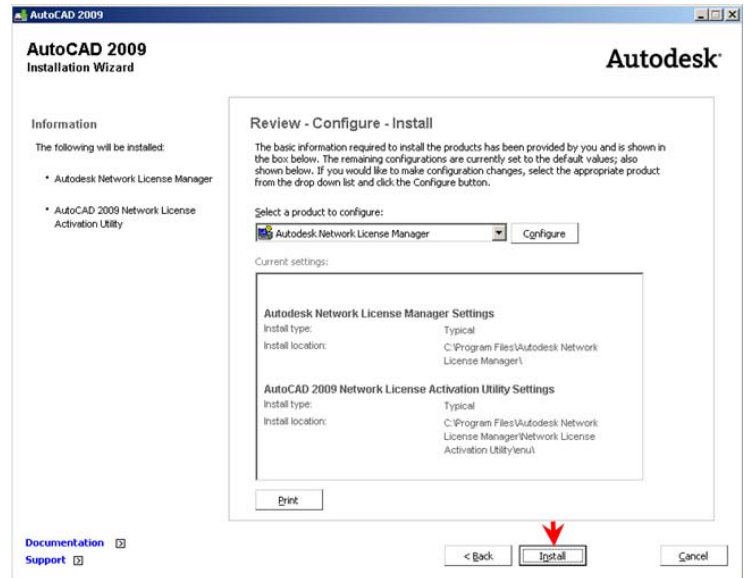


In the review – Configure – Install screen:

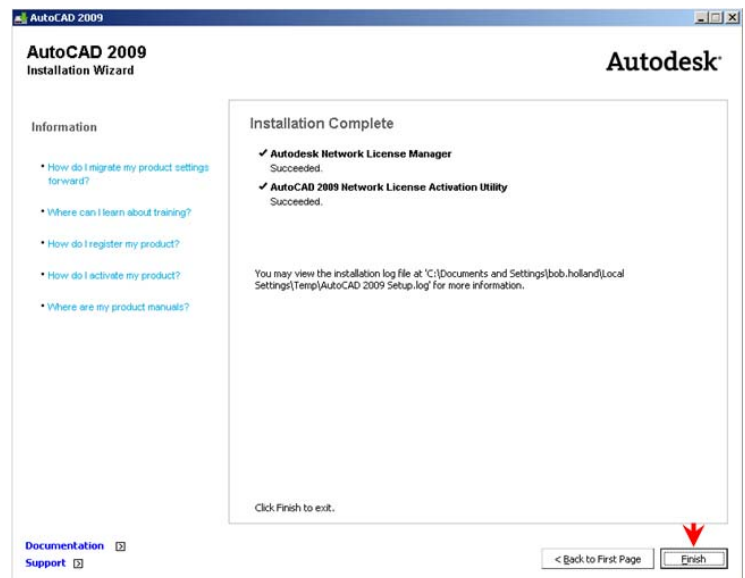
Click Install

Note:

It is highly recommended that you install the Autodesk Network License Manager in the default location.



These two applications only take about a minute to install.



Information needed to obtain a license file:

License server's name, MAC address, and product serial number

Methods of Obtaining a License File:

Email: authcodes@autodesk.com

Phone: 1-800-551-1490

Internet: Autodesk Network Activation Utility

Return email in 24-48 hours

Available 5:00am – 5:00pm PT Monday – Friday

Available 24x7x365

Autodesk will email you the license file.

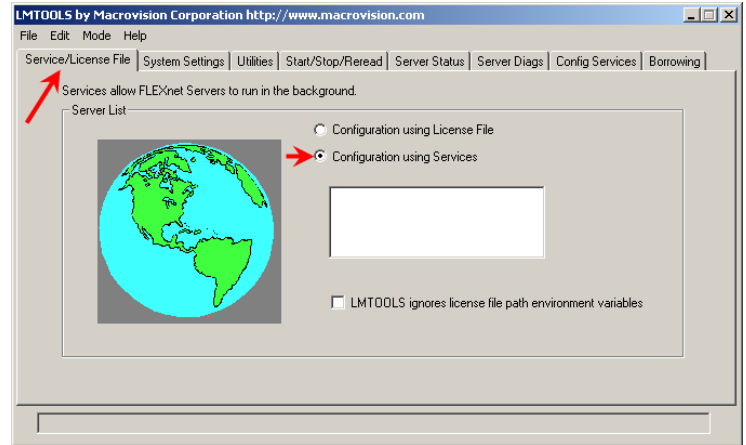
The default location to place your license file is:

C:\Program Files\Autodesk Network License Manager\License

After Installation there will be a LMTOOLS shortcut on the desktop.
Double click on the icon to Configure LMTOOLS

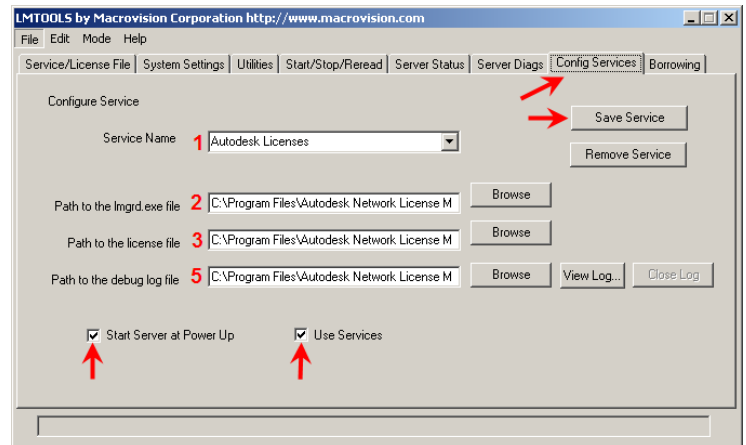
Go to the tab:
Service/License File

Select the Radio Button:
Configure using Services.



Go to the tab:
Config Services

Note:
This will allow you to create and configure a windows service that will automatically start if the computer is rebooted.



1. Change Server Name to: **Autodesk Licenses**
This creates a windows service name that others will understand
2. Browse to the LMGRD.EXE in: C:\Program Files\Autodesk Network License Manager
3. Browse to the license file: C:\Program Files\Autodesk Network License Manager\License
4. Create the following file empty text file in folder specified
File: Autodesk-Debug
Folder: C:\Program Files\Autodesk Network License Manager\Autodesk Logs\
5. Browse to this new log file

Select:

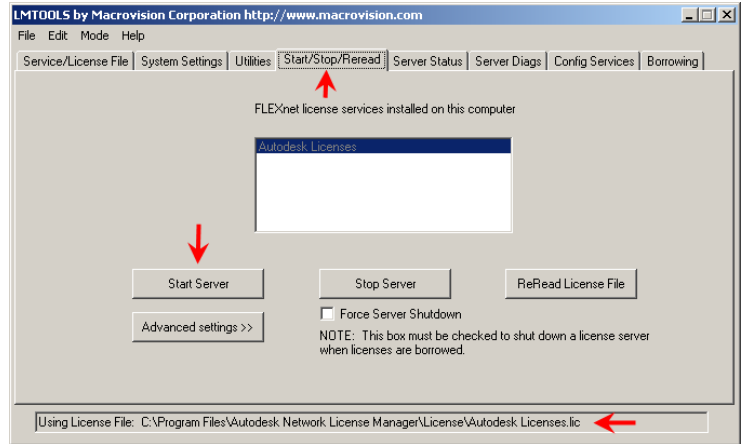
1. Start Server at Power Up
2. Use Services
3. Save Service

Note:

(You may need to change the Folder View settings and **uncheck** Hide Extensions for Known file Types otherwise you may create an Autodesk-Debug.log.txt file which will not work.)

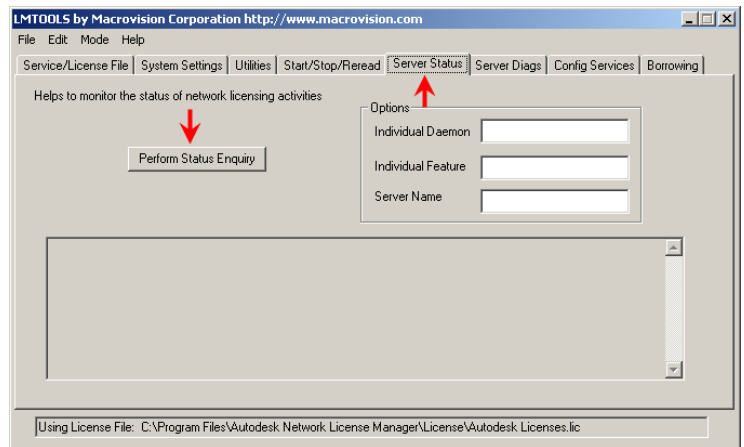
Go to the tab:
Start/Stop/Reread

Click **Start Server**

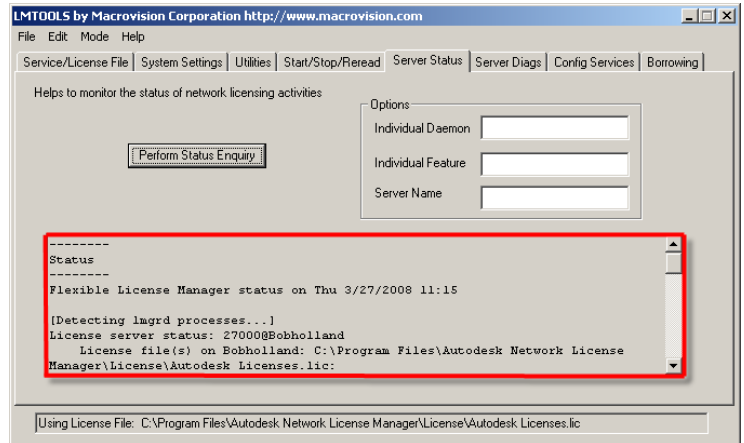


Go to the tab:
Server Status

Click **Perform Status Enquiry** to confirm the server started successfully.



Below is an example of a successful start of a license server for multiple Autodesk products.



On a successfully start it will return a message similar to this.

If the start does not appear to be successful, try doing a Status Inquiry in a couple of minutes.

If it is still un-successful, capture the information and paste it into an e-mail attaching the Autodesk-Debug.log and email it to support@ideateinc.com so that we can assist in the diagnosis of the problem.

You can also reference:

Autodesk's Network Deployment Troubleshooting Guide

<http://support.autodesk.com/getdoc.asp?id=TS1069989>

Close LMTOOLS

The License Manager will run as a windows service at startup.

This completes the configuration of the Network License Manager

```
-----
Status
-----
Flexible License Manager status on Wed 8/15/2007 18:51

[Detecting lmgrd processes...]
License server status: 27000@YourServer
License file(s) on YourServer : C:\Program Files\Autodesk
Network License Manager\License\Autodesk Licenses.lic:

YourServer : license server UP v11.4

Vendor daemon status (on YourServer ):

adskflex: UP v10.8
Feature usage info:

Users of 54600ACD_2008_0F: (Total of 2 licenses issued;
Total of 0 licenses in use)

Users of 54700REVITS_2008_0F: (Total of 2 licenses issued;
Total of 0 licenses in use)

Users of 55800ARCHDESK_2008_0F: (Total of 3 licenses
issued; Total of 0 licenses in use)

Users of 57100REVIT_2008_0F: (Total of 2 licenses issued;
Total of 0 licenses in use)

Users of PLIST: (Total of 1 license issued; Total of 0 licenses
in use)
```

Notes